

# Chrono Times



## Happy 10th Anniversary Ventura & Santa Barbara Chapter 190



**Below is a list of the 66 founding members  
Most are still active, but sadly, some have passed away.**

GEORGE ANTINARELLI  
JEANETTE BARCROFT  
PAUL BARINA  
HENRI BONNET  
ARLYS BOOGREN  
RONALD BOOGREN  
WAYNE CALLAWAY  
JIM CASH  
JIM CHAMBERLAIN  
CHRIS CLARKIN  
DAVID CLARKIN  
DAVE COATSWORTH  
KATHERINE DEMNY  
GEORGE FINN  
TERRY FLYNN  
WILLIAM FRANK  
KJERSTIN FREY  
RUSSEL L. FREY  
DUTCH FRIOU  
DOT FRIOU  
DONNA GAGLINI  
GEORGE GAGLINI



MOSTYN GALE  
ROBERT GARY  
FERDINAND GEITNER  
JIM GILMORE  
GARY GIROD  
RICHARD GLENN  
SYLVIA GRISWOLD  
JOY GROVE  
LEROY GROVE  
RICHARD HENDERSON  
ANNETTE INGERSOL  
JIM INGERSOLL  
DARRELL JONES  
SAMUEL KIRK  
GEORGE LABRAQUE  
WENDY LABRAQUE  
DAN McKINNON  
TOM MCKNETT  
KEN McWILLIAMS  
LYNN MCWILLIAMS  
PAUL MEDER  
LOREN MILLER



JORGE MONTOYA  
JORGE JR MONTOYA  
TONY MOSS  
ROCK NEWTON  
FRED RAACH  
WILLIAM ROBINSON  
DAVID RUBRIGHT  
ANDREW SAMUELS  
RICHARD SCHALL  
BEVERLY SCHMIDT  
MICHAEL SCHMIDT  
KATHI SHEFFREY  
PAUL SKEELS  
CHRIS ST. DENNIS  
KIM ST. DENNIS  
CHIP STEVENS  
LENNY STEVENS  
FRANK TRUTTA  
GLEN WEBB  
RANDY WINTON  
FRANK ZALUSKY  
NORMA ZUBER

## Officers and Directors

### PRESIDENT

Ken McWilliams  
(818) 718-8300 • internut@socal.rr.com

### 1st VICE PRESIDENT

Mostyn Gale  
(805) 962-9083 • clocks@saving-time.org

### 2nd VICE PRESIDENT

David Coatsworth  
(805) 358-4917 • dave@biswebdesign.com

### SECRETARY

Sue Gary  
(805) 388-1694 • shg2753@yahoo.com

### TREASURER

Mike Schmidt  
(805) 988-1764 • EagleCreekClocks@msn.com

### DIRECTORS

#### Annual Mart

Donna Gaglini  
(805) 647-6463 • dgaglini@gmail.com  
Sue Gary  
(805) 649-2052 • shg2753@yahoo.com

#### Membership

Robert Gary  
(805) 388-1694 • RobertsClockworks@verizon.net

#### Education

Ferdinand Geitner  
(805) 565-9097

#### Public Education

Lex Rooker  
(562) 869-1895 • lex.rooker@usinter.net

#### Hospitality/lunch

Mike Schmidt  
(805) 988-1764 • EagleCreekClocks@msn.com

#### Public Relations

Bob McClelland  
(818) 225-8212 • rjmccl@pacbell.net

#### Programs

Matt Bonaccorso  
(818) 790-0223 • bonaccorsomj@yahoo.com

#### Photographer

Bill Robinson  
(805) 642-7329 • whrobi@roadrunner.com

#### Newsletter

Ken McWilliams  
(818) 718-8300 • internut@socal.rr.com

#### Audio/Visual

Pat Fitzgerald  
(818) 882-6314 • 390carguy@gmail.com

#### Social Media

Jess Ashby  
(540) 222-3321 • JessAshby@gmail.com

#### Biographies

Walt Pickett  
(562) 420-2536 • pickettlakewood@aol.com

#### Door Prizes

Tom Beard  
(805) 659-4036 • tbeard@pacbell.net

#### Awards

George Gaglini  
(805) 256-4286 • georgegaglini@gmail.com

#### Web Site:

[www.nawcc-ch190.com](http://www.nawcc-ch190.com)  
WEBMASTER  
David Coatsworth  
dave@biswebdesign.com

## PRESIDENTS MESSAGE

By Ken McWilliams

As we wrap up another year with our November meeting, I have been reviewing the Chapter's first decade. We have grown so much over the years and accomplished most of the things that our founding members set as goals. Many of our original Board of Directors are still serving on the board. Through the years, we have added many new members to the board. This is essential in order to keep our governing body energized with fresh ideas. All members of Chapter 190 are invited to attend our board meetings, and I sincerely would like to see you attend one.

Many of you attended our meeting last month in Santa Barbara. The lunch and meeting portion was excellent; however, I would like to apologize for the tour portion. With only one tour guide available, it was impossible to do the complete tour as planned. The courthouse tour is very interesting, and I highly recommend that you try to attend one of the regular tours the next time that you are in the area.

On a sad note, I have to inform you of the passing of longtime NAWCC member, Fred Tischler. He was a major contributor and instructor to the NAWCC's Field Suitcase Workshops, and Chapter 124's workshops. Fred was a silver star fellow and a life member of the NAWCC. We will miss him.

To all of you potential sellers out there, don't forget that our annual mart will be a little earlier this year. It will be held Sunday, February 19, 2017 at the Ventura Fairgrounds. A seller's application can be found at the end of this newsletter. Even though there will be more tables available at this time, we expect an early sellout so if you're interested, don't wait too long.

Hope to see you all at our November 20th meeting, and have a piece of anniversary cake..

*Ken McWilliams*

***P.S. Remember, we do not have a meeting in December.***



## Happy Birthday

### November

Dave Coatsworth, Ferdinand Geitner, Jim Gilmore,  
Ernie Jenson, Keith Lord, Bryan Mumford, Peter Racette,  
Norman Ray, George Sessions.

### December

Gene Corriden, Dutch Friou, Gary Girod, Carol Heise, Robert Ingham,  
Neil Kuns, Stephen Marks, Bob McClelland, Bill Roninson, Daniel Weiss.



## A Look Behind the Private Label – Part 3

by *Dave Coatsworth*

### *The Jaccard Family*

One cannot discuss the history of jewelers in the Mid-west without discussing the Jaccard family. The Jaccard history is, indeed, a somewhat confusing one, in which several different concerns existed and are often mistaken for one another.

This history begins in 1829 when Louis Jaccard, a Swiss watchmaker, immigrated to the United States and settled in St. Louis. His first place of business was a little shop located on Main St., which he shared in partnership with Charles Recordon. In those days, there was considerable business in the city as St. Louis was the gateway to the West and also a major steamboat port on the Mississippi. In 1837, a significant robbery of \$3,000 in goods took place, nearly wiping the business out. At this point, Charles Recordon left the business, dissolving the partnership.

Louis sent for his nephew, Eugene in 1837 and, with his arrival, renamed the business Louis Jaccard & Co. In 1848, Louis retired and sold his interest in the firm to Eugene, who operated under the name E. Jaccard. In 1852, he brought in A. S. Mermod (another family member) as a partner and then in 1855 added David Constant Jaccard as a third partner. At that point, the firm became known as E. Jaccard & Co. (Note that this sequence of events is reported in numerous sources, including the *Jeweler's Circular* and the *History of Saint Louis City and County*. While the events are consistent, the dates vary somewhat. The dates given here are from the *History of Saint Louis City and County*.)

As we see with many businesses in this era, fire was always a threat and the Jaccard business was not immune. In May of 1849, fire swept through the city of St. Louis, completely destroying the store and its contents. The partners rebuilt a beautiful store on 4th Street, between Pine and Chestnut and business continued briskly. In 1860, the firm moved to a marble building on the corner of 4th and Olive Streets. The store was then known as the "Marble Palace".

The partnership of E. Jaccard & Co. lasted until 1864 when it was dissolved, with two businesses resulting. D. C. Jaccard & Co. was formed by D. C. Jaccard, A. S. Mermod and C. F. Mathey. A year later, Goodman King would join the firm. This firm would become Mermod, Jaccard & Co. in 1873 and then would later be incorporated as the Mermod & Jaccard Jewelry Co.

The other firm created by this split was headed by Eugene Jaccard. This firm was known as E. Jaccard & Co. Eugene passed away in 1871 and his nephew, Eugene J. Cuendet, took over management of the firm,

which, in 1880, would become known as the E. Jaccard Jewelry Company. At the time, the firm occupied a beautiful five-story building on the corner of Fifth and Olive Streets. Eugene Cuendet died in 1894 at which time Thomas D. Witt became president of the company. (Thomas D. Witt had previously been a partner in the Prouhet & Witt jewelry concern, which was bought out by the E. Jaccard Jewelry Company in 1872.)

A third firm was founded by members of this family when Eugene G. E. Jaccard and Walter M. Jaccard, D. C. Jaccard's sons, left Mermod & Jaccard in 1888 and started their own jewelry business in Kansas City. Their store, known as the Jaccard Watch and Jewelry Company, was first located at 815 Main Street and later, 1034 Main. When Eugene retired in 1895, the company was reorganized by Walter as the Jaccard Jewelry Corporation. A third brother, Ernest A. Jaccard, would sever ties with the St. Louis company and join his brothers in Kansas City in 1902. The firm moved to 1017 Main in 1906. Walter B. Jaccard, Eugene G. E. Jaccard's son, would later head the Kansas City firm.

Fire again struck Mermod & Jaccard just before Christmas of 1897. It was said that the vaults, loaded with Christmas merchandise, took a full week to cool down enough to open. The company was, however, open for business in temporary quarters across the street the following morning.

In 1901, Mermod & Jaccard bought out the E. Jaccard Jewelry Company, as well as Merrick, Walsh & Phelps. The consolidated firm's name was changed to Mermod, Jaccard & King in 1905.

The firm of Mermod, Jaccard & King was itself bought out by the general merchandiser Scruggs, Vandervoort and Barney in 1917. It incorporated Mermod, Jaccard & King into its own downtown department store and later into other stores in its chain. Scruggs, Vandervoort and Barney would remain in business until financial pressures caused them to close their doors in 1969.



The watch movement shown above is manufactured by the Illinois Watch Company for E. Jaccard & Co. (serial number 134057) It is an 18 size, model 2, Columbia grade, 11 jewel, hunting case movement made in 1880.

**Continued on page 4**





Serial number 1181445 is also an 18 size movement (model 2, grade 101, 11 jewel) made in 1893. It is interesting to note that E. Jaccard private label watches usually have a “No.” on the movement, such as these which have “No. 3” and “No. 13”. It is unknown what these numbers refer to.

There are also numerous private label examples in existence bearing the names of Mermod & Jaccard and the Jaccard Watch and Jewelry Company. Notable among these are the “Mermod & Jaccard's Paragon Time Keeper” movements that were manufactured by the Hamilton Watch Company ■



## Jess Ashby

Jess was born in Warrenton, Virginia, and grew up 90 minutes south of Washington DC. He went to college in Newport News, VA where he received a Bachelor's Degree in Theater, with a concentration in Design/Technology.

Due to a great recession in the area, he moved to Los Angeles to seek employment. Jess now lives in Burbank with his wife, Maureen.

Jess is presently a software project manager for Ticketmaster. He formerly worked as a project manager for a firm that installs sound and video equipment in theme parks and museums, and then as a product developer for a stage lighting manufacturer,

Jess grew up on a farm and was always fascinated by the machinery. When he was 10 years old, he amassed a collection of about 40 small, inexpensive, clocks because they were machines that he could own and take apart himself. In about 1997, his aunt and uncle took him to Pennsylvania for a long weekend in Lancaster County. One of their stops was the NAWCC museum. As he moved toward his teenage years, the museum remained vivid in his memory, even after he got out of clock collecting. By then he had divested himself of all his clocks except the one that kick-started his interest: a circa 1870 Waterbury steeple clock gifted to him by that same aunt and uncle.

Early last year, he found a Lawson cyclometer while browsing an antique shop in Burbank. Being in love with its Art Deco styling, he decided to purchase it. When it stopped running well, he decided to reach out to a local clock repairman. Jess used the NAWCC service directory since he remembered the organization from his childhood trip. The repairman he contacted turned out to be Ken McWilliams. Through his connection with Ken and the Lawson clock expert he pointed him to, Neil Kuns, he became a member of Chapter 133 (Western Electrics) and soon thereafter Chapter 190. The wealth of knowledge and friendliness of the members surpassed his expectations, and he is glad to say “I've become a collector again”.

Jess is Chapter 190's Social Media Director, an Education Committee member, Computer Chair for 2016 Channel Islands Regional, and the Chapter 133 Secretary (starting in 2017).

He enjoys hiking, off-roading, playing banjo and guitar, and visiting places of historical significance. ■

## Photos from our first meeting, January, 2007





# Tales From the Bench

by Ferdinand Geitner

## A Timekeeper

The name suggests some device that “measures” time. But what if the time one is trying to measure is not the usual 24 hours in a day, sixty minutes an hour which we take for granted and “probably” grew up with? Read on!

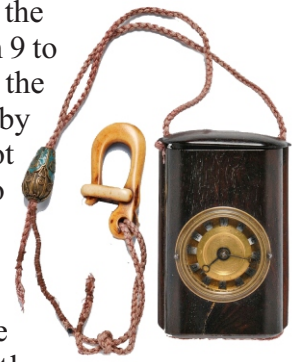
An interesting rectangular pocket watch came across my bench recently. Attached to a thin rope with a bone hock on the other end, and encased in Tortoise Shell. The numerals are written in Japanese and the movement is rectangular, with engraved plates like a small clock, and has a cylinder escapement. Western cylinder escapements usually have a steel escape wheel with raised teeth interacting with a steel cylinder. The designers consensus is that the same materials wear more on each other than different materials and early pocket watches had brass escape wheels and steel cylinders but they soon changed to steel escape wheels which performed satisfactorily. One often finds old cylinder watches with grooves worn into the cylinder. This one has a flat, brass escape wheel (see picture) which works with a steel cylinder and was designed by Japanese watchmakers for the local market.

Local market means local time. This means it didn't indicate fixed hours!!! In the late EDO period (1603 to 1868). Japan still used temporal time which changed with the seasons and from sunrise to sunset. This explains why the dial on this pocket watch has numerals that are movable depending on the seasons.

Dawn and dusk are marked as the sixth hour and it was counted from 9 to six backwards; this stems from the period when time was measured by burning incense (reducing) but not counting the numbers 1 to 3 due to religious reasons. (The monks used 1 to 3 bells as a call to prayer.) Can it get more complicated?

Check the picture of the “Rotating Dial” comparing the different positions of the numbers between winter and summer solstice!

Apart from all that, it keeps pretty good time (depending on location) ■



Balance & Regulator



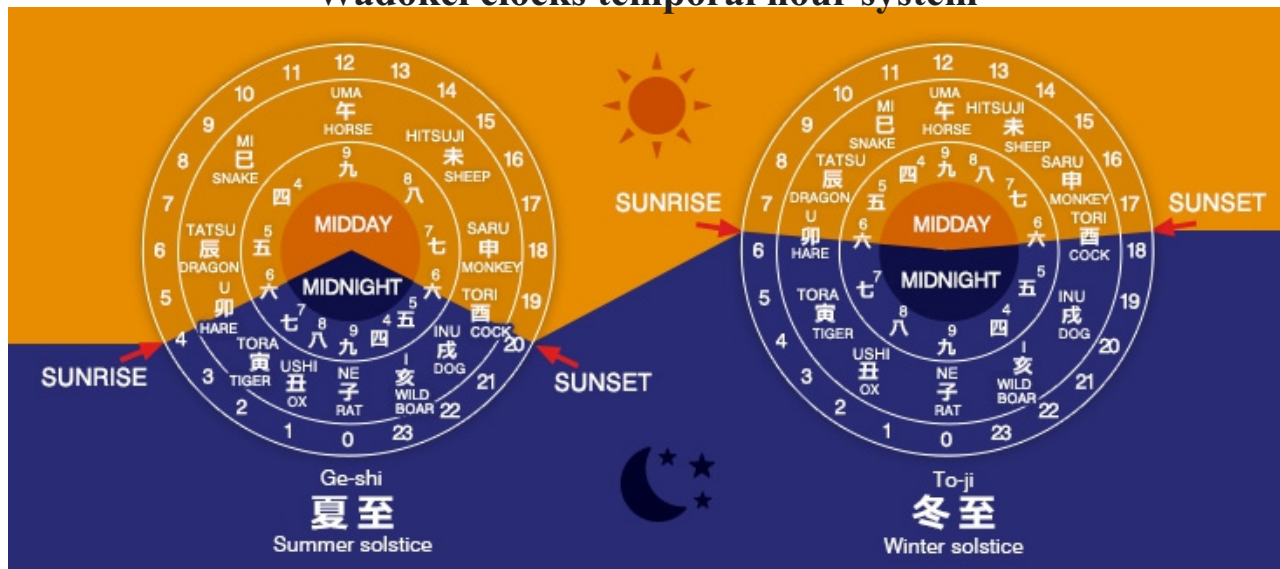
Escape wheel

Dial with movable numerals



Side view

### Wadokei clocks temporal hour system





*Fred Tischler*



*Aug 16, 1934 - Nov 13, 2016*

Fred passed away peacefully at home on Sunday, November 13, 2016. He was a native Texan, who graduated from Pilot Point High School in 1951, as well as receiving a BSEE from Southern Methodist University in 1961 and a MSEE from New York University in 1963

Fred joined the NAWCC in 1988, and the local Lone Star Chapter 124. He developed clock repair classes for Chapter 124, and was very active with the FSW Program as one of the instructors. Fred participated on the NAWCC Board of Directors, as a museum trustee, the Nominating and Elections Committee, and on the Education Committee. Fred was special. . . he will be missed.

Fred's obituary can be found at:

[www.turrentinejacksonmorrow.com/obituaries/fred-r-tischler](http://www.turrentinejacksonmorrow.com/obituaries/fred-r-tischler)

**The November Chapter 190 Meeting  
is November 20, 2016**

**Sellers may start setting up at 11:30**

**The Mart is open from 12:00 til 1:15**

**The Meeting starts at 1:15**

**"Panama Master Clock"**

***Presented by Alan Bloore***

Alan Bloore will show and explain the operation of his Panama Canal Master Clock and the accompanying Control Panel.

**No meeting in December**

**Don't forget to bring something  
for "Show n Tell"**

## EDUCATIONAL OPPORTUNITIES

*by Mike Schmidt*

The Sunday morning workshops held prior to the monthly meetings are free and open to all. This is a great opportunity to learn many new repair techniques. It is an opportunity to bring clocks and watches and receive assistance with perplexing repair problems. Guests are always welcome. The workshop begins at 11:00 and the coffee will be on.

**Platform Escapement Repair** Workshop is scheduled for March 11th & 12th. The instructor will be Ferdinand Geitner. The workshop will be held at the Dudley House Museum in Ventura. Cost of this workshop is \$200. Contact Mike Schmidt 805 9881764 or email [EagleCreekClocks@msn.com](mailto:EagleCreekClocks@msn.com) for registration

A **FSW 103 "Introduction to Chiming Clocks"** is January 20-23 at the Historic Off Fellows Lodge in Santa Paula. The instructor is Lex Rooker. Pre-requisite is completion of FSW101 and FSW 102 workshops.

A **FSW 301 "Introduction to Basic Pocket Watch Repair-American Watch"** is offered January 27-28 2017 at the Dudley House Museum in Ventura, CA Ferdinand Geitner will be the instructor. Contact Mike Schmidt for more information and to reserve a place in the workshop.

**"Introduction to Antique Clock Collecting, Repair & Maintenance"** Open to members, friends and the public. The only prerequisite for this workshop is "Interest & Curiosity" in mechanical clocks. All tools, movements, and knowledge will be supplied. The next workshop is February 11 & 12 2017. For further information, contact Mike Schmidt 805 988 1764 or email [EagleCreekClocks@msn.com](mailto:EagleCreekClocks@msn.com)

*Please let me know what workshops or instructions you desire.*

Contact Mike Schmidt at phone: 805 988-1764 or e-mail [eaglecreekclocks@msn.com](mailto:eaglecreekclocks@msn.com)

*"Action is the Foundational Key to All Success"*





# CLASSIFIED PAGE

This page is dedicated to advertising for Chapter 190 members. It is, of course, free to members.

## SERVICES OFFERED

### **The Montecito Clock Gallery**

Restoration, repair, sales of clocks and watches.  
**Ferdinand Geitner**, mbhi, owner and operator  
Now located at 1187 Coast Village road, unit 10a  
Montecito (one block from old site)  
(805) 565-9097

### **The Clock Gallery**

**George Gaglini**

*Serving Ventura County and More . . .*  
*Expert Repair - Service - Restoration*  
*Grandfather - Wall - Mantel - Marine - Atmos*  
*House Calls - Packing & Moving*  
**805-647-0699 or 805-497-8381**  
***theclockgallery@roadrunner.com***

### **The Tic Toc Shop**

**Clock  
Repairs,  
Restorations  
& Appraisals.**

**Ken McWilliams**  
**(818) 718-8300**

**Jorge Montoya**

### **Complete Watch Service Center**

Repair & Restore all American & Swiss watches.  
12 years as a Rolex technician. We maintain a  
complete shop with all the latest equipment.  
**(562) 531-0545 • (562) 688-6171**  
E-mail: [jorgemont2001@netzero.net](mailto:jorgemont2001@netzero.net)

### **PACIFIC COAST CLOCKS**

**In business since 1977.**

Sales and Restoration of both new and antique  
clocks. Repair of all types of mechanical clocks.

*Loren Miller* proprietor.

*4255 E. Main St., No. 15, Ventura, Ca. 93003*

*(Located in Firehouse Plaza at Main St. and Telephone Rd)*

*Monday through Saturday 10:00 to 6:00 pm.*

**Tel. 805-650-8800**

## FOR SALE

### **WATCH REPAIR TOOLS & MORE!**

I will have a huge selection of watch repair  
tools and other items from my latest estate  
buy at the Chapter 190 meeting.

**Dave Coatsworth**  
**dave@daveswatchparts.com**



### **MicroSet Timers for Clocks and Watches**

Precision electronic timing tools for clock and  
watch repair with many unique features. Prices  
start at \$250. Full information is on the website:

**[www.WatchTimer.com](http://www.WatchTimer.com)**

**Mumford Micro Systems**  
**3933 Antone Road**  
**Santa Barbara, CA 93110**  
**(805) 687-5116**

## WANTED

### **URGENTLY NEEDED, VISIBLE ESCAPEMENT MOVEMENT**

French type-platform escapement (no pendulum)

Winding hole spacing of 38.9 mm, (1.53")

Repairable, other details available on request.

Bob Reichel, [welchdoc@yahoo.com](mailto:welchdoc@yahoo.com) **Ph: 1-206-364-7374**

*Antique French 2 or 3 dial calendar clocks.*

*Antique English 2 or 3 gear-train skeleton clock.*

Loren Miller, **Pacific Coast Clocks**

4255 E. Main St., No. 15, Ventura, Ca.

Located in Firehouse Plaza (Main St. & Telephone Rd.)

**Tel. 805-650-8800**

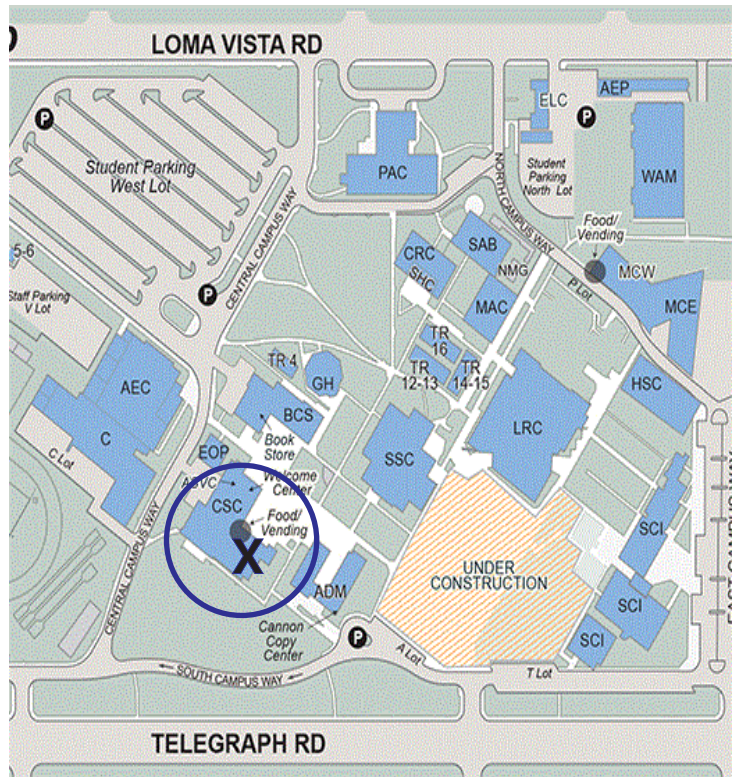
### **- Chronometer -**

Hamilton 21 Marine Chronometer in running condition, with  
inner box and gimbals; outer box not essential.

Please contact: Giorgio Perissinotto

E-mail: [giorgio@spanport.ucsb.edu](mailto:giorgio@spanport.ucsb.edu)

The Chapter 190 meetings are held the third Sunday of each month. (No meeting in December)  
 We will meet in the Campus Student Center (CSC) on the Ventura College campus. The CSC is located in building "B", east of the gym and



**November - December, 2016 Issue**

**NEXT MEETINGS**

**NOV 20**

There will not be a December meeting



If Undeliverable return To:  
 17738 Superior St. Unit 21  
 Northridge, CA 91325

**Chrono Times**



# Seaside

# Clock and Watch

# Mart

Ventura/Santa Barbara CA, Chapter 190 of the National Association of Watch and Clock Collectors  
Chapter 190 website: [www.NAWCC-ch190.com](http://www.NAWCC-ch190.com)

## IMPORTANT SELLER INFORMATION

PRE-REGISTRATION TABLE RESERVATION DEADLINE: Feb 8 • EVENT DATE: February 19, 2017

## We're Back!

- 125 - 8 foot tables available for sellers
- One free admission for sellers
- Spacious area for unloading and loading
- Sellers may set up beginning at 7:30 A.M.
- Coffee truck on site at 7:30 A.M.
- Mart opens to members and public at 9:00 A.M.  
Closes at 3:00 P.M.
- Carts available for your use in moving items
- Helpers to aid with unloading, if needed
- Free evaluations promises to draw new faces!

All clock and watch sellers must be NAWCC members to sell clocks and watches.

(Non members may purchase a 4 month trial membership for \$30.00. Includes NAWCC publication, "Watch & Clock Bulletin")

## SUNDAY

## FEBRUARY 19, 2017

9:00 A.M. to 3:00 P.M.

### Ventura County Fairgrounds at Seaside Park • Santa Cruz Hall

10 W. Harbor Blvd. • Ventura, CA 93001

#### DIRECTIONS:

**From Los Angeles:** From the Ventura Freeway (Highway 101) northbound, take the Seaward Ave. exit or the California Street exit. Turn left towards the ocean to Harbor Blvd., turn right on Harbor and continue until you reach The Ventura County Fairgrounds at the corner of Harbor and Figueroa.

**From Santa Barbara:** From the Ventura Freeway (Highway 101) southbound, take the Seaward Ave. exit, make an immediate right on Harbor Blvd. and proceed to Ventura County Fairgrounds at Seaside Park.

Registration info: Date sent \_\_\_\_\_ Amount sent \$ \_\_\_\_\_

Number of wall tables \_\_\_\_\_ Number of non wall tables \_\_\_\_\_

Number of additional admissions \_\_\_\_\_ Check number \_\_\_\_\_

**NAWCC Chapter 190**  
C/O Donna Gaglini  
970 Jonquill Ave  
Ventura, CA 93004

Questions? Call 805 647-6463  
or E-mail: [chap190Mart@gmail.com](mailto:chap190Mart@gmail.com)

### SELLERS REGISTRATION FORM

**NOTE:** The NAWCC, its officers and members of Ventura Chapter 190 are not responsible for any loss, injury, or tort during the event. California State tax laws apply to this event. California requires dealers and sellers that sell more than two times in a twelve month period to have a valid California sellers permit. These may be obtained free of charge from any California Board of Equalization office.

**THIS FORM MUST BE RECEIVED WITH PAYMENT BY February 8, 2017**

Please mail this form with payment to:

**NAWCC Chapter 190**  
C/O Donna Gaglini  
970 Jonquill Ave  
Ventura, CA 93004

Questions? Call 805 647-6463  
or E-mail: [chap190Mart@gmail.com](mailto:chap190Mart@gmail.com)

Member: \_\_\_\_\_ NAWCC # \_\_\_\_\_

Address: \_\_\_\_\_ City: \_\_\_\_\_

State: \_\_\_\_\_ Zip: \_\_\_\_\_ Phone: \_\_\_\_\_

E-Mail: \_\_\_\_\_

(Your E-Mail address will be kept in strict confidence.)

I sell primarily:  Watches  Clocks

QTY TOTAL

Pre-Admission \_\_\_\_\_ @ \$5 = \_\_\_\_\_

Mart Tables (8 ft) \_\_\_\_\_ @ \$25 = \_\_\_\_\_

Mart Wall Tables (8 ft) \_\_\_\_\_ @ \$30 = \_\_\_\_\_

Trial NAWCC membership \$30 = \_\_\_\_\_

Total Enclosed: \$

(PAYABLE TO: NAWCC Chapter 190)